

## BX-Y08(4G)-1 SPECIFICATION



Version : V1.1    Release date : 2021.3.22

# Catalog

|                                       |   |
|---------------------------------------|---|
| Features.....                         | 1 |
| Guiding.....                          | 2 |
| Safety note.....                      | 2 |
| Functions.....                        | 3 |
| Control area.....                     | 3 |
| Support high refresh.....             | 3 |
| Multiple communication mode.....      | 3 |
| GPS position.....                     | 3 |
| Abundant 3D stunt.....                | 4 |
| Support database.....                 | 4 |
| Support Android app.....              | 4 |
| Flexible program release methods..... | 4 |
| Online update firmware.....           | 4 |
| Support many sensor.....              | 5 |
| Support remote control.....           | 5 |
| Timer switch screen.....              | 5 |
| Relay function.....                   | 5 |
| Technical Specification.....          | 6 |
| Dimension.....                        | 7 |
| Interface.....                        | 8 |

## **Features**

- Support 4G wireless communication
- On-board 4\*HUB75 Interface, one card to one screen,suitable for all kinds of small size LED full color screen
- High performance CPU, hardware decoding, HD video playback smoothly .
- On-board 100M Ethernet port,audio port, Support USB port Wi-Fi module and will support 4G router soon .
- Support cluster control, especially suitable for large-scale urban outdoor advertising screen large-scale deployment, management
- Abundant 3D stunt and Flash subtitle
- Support U disk display directly,also support importing display.
- Support Groups cluster management
- Support firmware update online.
- Support database,Very suitable for high-speed rail, hospitals, banks and other occasions of information release.
- Adopter the second YQ protocol,and it is more convenient for custom and SDK projects.

## Guiding

### Safety note

- The input voltage is 3.3V ~ 6V. Please strictly ensure the power quality of BX-Y series players.
- Please use the product in a clean, dry and ventilated environment. Do not use the product in high temperature, humidity and other environments.
- This product is an electronic product. Please stay away from fire source, water source and flammable and explosive dangerous goods.
- There are large-scale integrated circuit chips in this product. Please do not open the chassis or repair the equipment by yourself.
- In case of abnormal conditions such as smoking and peculiar smell, please turn off the power switch immediately and contact the dealer.

## **Functions**

### **Control area**

BX-Y08 ( 4G ) -1 support 512× 128 ,Total 64K pixels, the maximum width ≤1024, the maximum height 256 .8 nos T75 on board.one screen match with one card,used for small size full color screen and cluster control.Widely used in Led posters and Led pole screens .

### **Support high refresh**

BX-Y series of controller support high refresh(here refers to the receiving card for LED screen refresh,users scan)or mobile phone camera shooting picture from time to time, no distortion, no scanning line,the true nature and excellent results.

### **Multiple communication mode**

The controller is on board a 100M network interface, internal integrated 4G wireless module, WIFI module, also supports USB interface, external WIFI module. Built-in WIFI both as a hot spot (AP), but also as a terminal. Supports external 4G routers. For the general network topology, users can use the network cable directly access the router or switch,and management PC communication. For short-range wireless applications, the user can open the controller built-in WIFI, access to their own routers, to achieve online control management. Users can also open the controller's WIFI hot spots,access to their own PC controller, to achieve management control. For the controller hot spots, the user can set the password, the rights management.

### **GPS position**

Optional GPS antenna. After login iledcloud cloud platform, in addition to the functions of remote editing, preview and regular and fixed-point playback, the controller can also support GPS positioning. When the controller obtains the returned positioning signal, it can locate the screen position and display the position of the screen on the satellite map positioning interface of the iledcloud cloud platform.

## **Lage storage capacity**

It provides high-capacity built-in flash memory, also supports external capacity expansion. It was built-in 4G flash memory, users can store 8 hours of high-definition video.it provide SD card slot,allowing users to insert large capacity SD card, to expand capacity.

## **Abundant 3D stunt**

Support graphic text, subtitles, video, lunar calendar, dial, timing, temperature, humidity, announcements, weather forecasts areas.Text areas can be pictures or text, supporting a wealth of special effects, including curtain, pan, laser, mosaic, shutter and other common effects.Controller built-in GPU (graphics processing unit), support Abundant 3D stunt and FLASH subtitle.

## **Support database**

The controller will support database area, supports multi-page display, supports MYSQL, SQL server and other format database in the near future.

## **Support Android app**

It support Android APP LedshowYQ to add,edit and send program, very easy to operate.The APP support search screen, support multi language, support dynamic preview, video trans-coding function.Support gesture zoom in and out of partition function.

## **Flexible program release methods**

Users can use PC software LedshowYQ to add ,edit , preview, release. If network is not convenient,users can also use U-disk to import programs or plug-in and display .USB transmit distance is  $\leq 3M$ ,It can be reach 10 M with a extension line.

## **Online update firmware**

BX-Y series support remote upgrade firmware, users can use PC software LedshowYQ, iLEDCloud platform to upgrade the latest firmware,to enhance controller functionality, performance, solve bugs.The controller has built-in logging function, it can record various important events, and support

remote consult, analyze and solve the fault

## **Support many sensor**

Match with VMF multi-function card.BX-Y series can support many kinds of sensors . will support temperature sensor/ temperature&humidity sensor /noise sensor /air quality sensor /wind speed &wind direction sensor /brightness sensor in the near future

## **Support remote control**

It supports remote control , very easy to switch programs by the remote .and also the screen brightness,volume,turn on and off screen ,testing etc.user experience comparable to TV remote control,especially suitable for indoor led screen management.

## **Timer switch screen**

The LedshowYQ software support timing switch screen. After setting the turn on and turn off time, the computer will turn on the machine on time and automatically. It can make use of manpower and material resources reasonably, and greatly improve the service life and reliability of the display screen. When the user is inconvenient to operate on the side of the computer, this function can better realize no one. The function of duty.

## **Relay function**

In the near future ,BX-Y series will add relay function ,Match with VMF multi-function card,the controller supports remote start, shutdown control , effectively reduce the screen power consumption,saving energy.

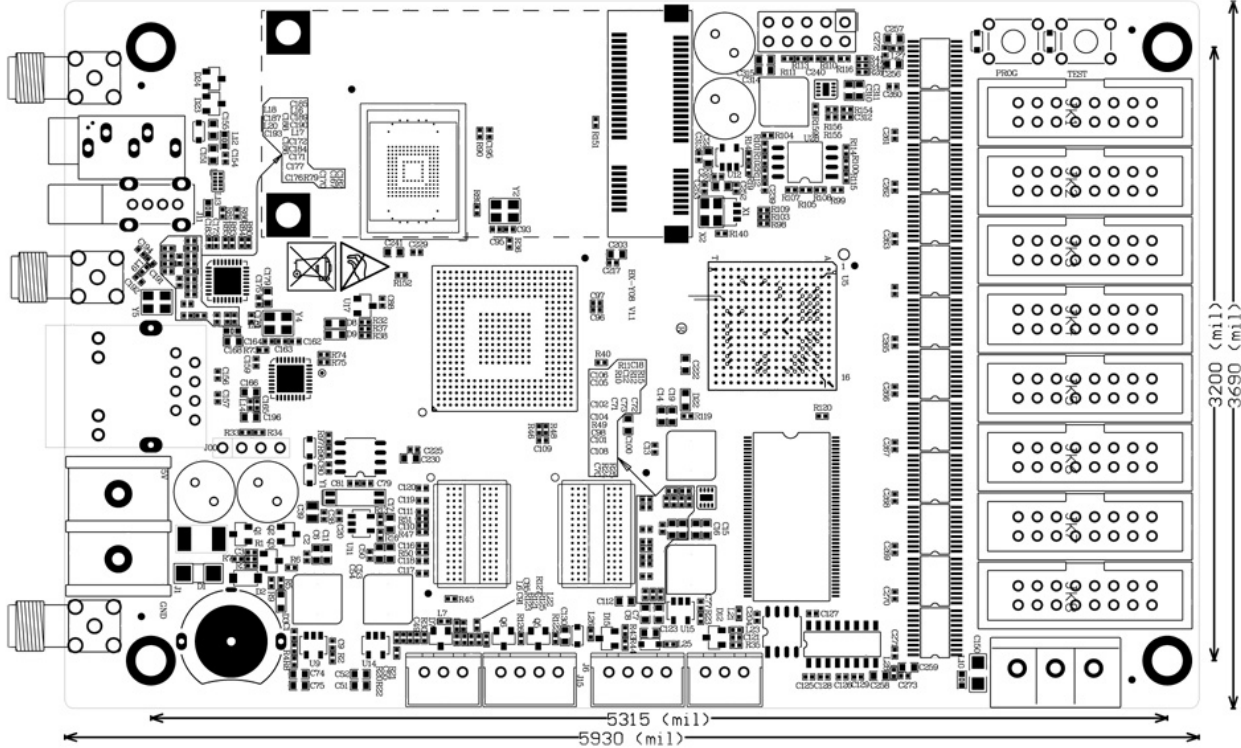
## Technical Specification

| Screen index     |         |
|------------------|---------|
| parameters       | size    |
| Min control size | 64 × 64 |
| Max control size | 512×256 |
| Max width        | 1024    |
| Max height       | 512     |

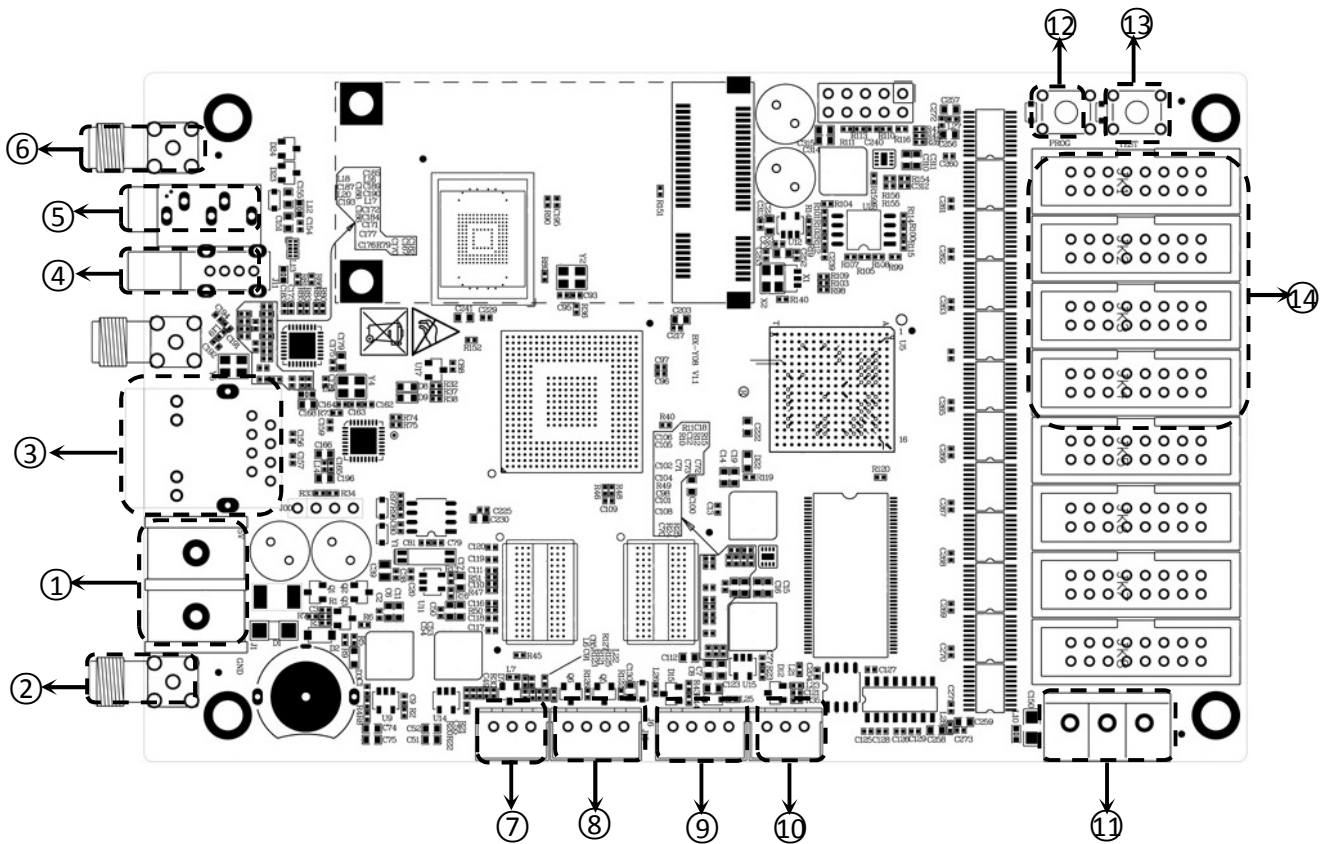
| Complete specification |  |
|------------------------|--|
| Input voltage          | 4V~6V make sure to use good quality power supply |
| Power                  | ≤10W   |
| Working temp           | -40°C ~ 80°C                                     |



# Dimension



# Interface



| INSTRUCTION |              |   |
|-------------|--------------|---|
| 1           | DC           | 5V power supply port, DC input, 5V, support 3.3V~6V |
| 2           | Antenna      | Connect with 4G antenna                             |
| 3           | 100M         | 100M Ethernet connect with computer                 |
| 4           | USB          | USB port to transfer program                        |
| 5           | AUDIO        | Audio output port                                   |
| 6           | Antenna      | Connect with GPS antenna(optional)                  |
| 7           | IR           | Infrared remote controller                          |
| 8           | SWITCH       | Relay switch port                                   |
| 9           | LIGHT        | Brightness sensor port                              |
| 10          | HUMI/TEMP    | temp&humidity sensor                                |
| 11          | 485          | 485 port ( Connect environment sensor )             |
| 12          | PROG         | Program switching button                            |
| 13          | TEST         | Test button   |
| 14          | 75 interface | 75 interface ( JK1、JK2、JK3、JK4 )                    |

## Contact Us

### Shanghai ONBON Technology Co.,Ltd (Headquarters)

Address: 7 Floor, Tower 88, 1199#, North Qinzhou Road, Xuhui District, Shanghai City, China

Fax: 086-21-64955136

Website: [www.onbonbx.com](http://www.onbonbx.com)

### ONBON (Jiangsu) Optoelectronic Industrial Co.,LTD

Address: 1299#, FuchunJiang Road, Kunshan City, Jiangsu Province, China

## Sales Contacts

Tel: 0086-15921814956 0086-15800379719 0086-15850351852

Email: [onbon@onbonbx.com](mailto:onbon@onbonbx.com)

## Second Development

Tel: 0512-66589212

Email: [dev@onbonbx.com](mailto:dev@onbonbx.com)

## iLEDCloud

Website: <http://www.iledcloud.com/>

